

## NOTICE

This drainage map has been prepared for information purposes only. The listed facilities have been determined from available information provided by public agencies, but may not be exact or up to date. The user of this map is responsible for verifying exact location, ownership and maintenance responsibilities of the drainage facilities. Additional information may be obtained from public plans and recorded deeds. Neither the County of Orange nor the Orange County Flood Control District (OCFCD) assumes any liabilities for inaccuracy of this map.

# WATERSHED E

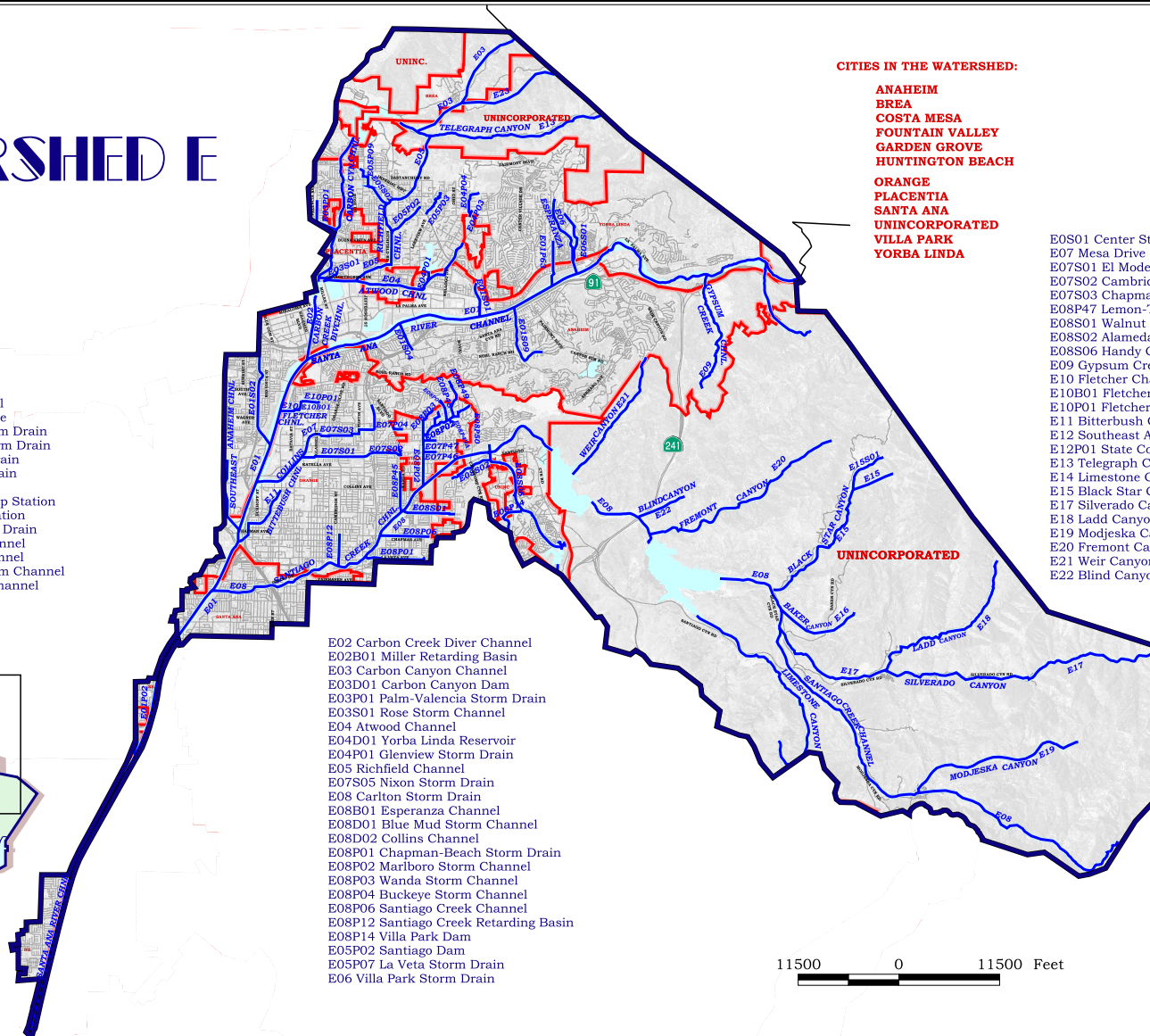
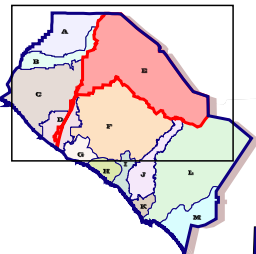
### CITIES IN THE WATERSHED:

- ANAHEIM
- BREA
- COSTA MESA
- FOUNTAIN VALLEY
- GARDEN GROVE
- HUNTINGTON BEACH
- ORANGE
- PLACENTIA
- SANTA ANA
- UNINCORPORATED
- VILLA PARK
- YORBA LINDA

- E0S01 Center Street Storm Drain
- E07 Mesa Drive Storm Drain
- E07S01 El Modena Storm Drain
- E07S02 Cambridge Storm Drain
- E07S03 Chapman Grande Storm Drain
- E08P47 Lemon-Taft Storm Drain
- E08S01 Walnut Storm Channel
- E08S02 Alameda Storm Channel
- E08S06 Handy Creek Storm Channel
- E09 Gypsum Creek Channel
- E10 Fletcher Channel
- E10B01 Fletcher Retarding Basin
- E10P01 Fletcher Street Storm Drain
- E11 Bitterbush Channel
- E12 Southeast Anaheim Channel
- E12P01 State College Storm Drain
- E13 Telegraph Canyon
- E14 Limestone Canyon
- E15 Black Star Canyon
- E17 Silverado Canyon
- E18 Ladd Canyon
- E19 Modjeska Canyon
- E20 Fremont Canyon
- E21 Weir Canyon
- E22 Blind Canyon

- E01 Santa Ana River Channel
- E01P01 Prado Infiltration Line
- E01P02 Harbor-Edinger Storm Drain
- E01P14 Esperanza Road Storm Drain
- E01P63 Yorba Park Storm Drain
- E01P79 Southpark Storm Drain
- E01P80 Harbor Storm Drain
- E01PS1 Harbor-Edinger Pump Station
- E01PS2 Southpark Pump Station
- E01S01 East Richfield Storm Drain
- E01S02 Chantilly Storm Channel
- E01S04 Deerfield Storm Channel
- E01S09 Walnut Canyon Storm Channel
- E01S13 Eucalyptus Storm Channel

- E02 Carbon Creek Diver Channel
- E02B01 Miller Retarding Basin
- E03 Carbon Canyon Channel
- E03D01 Carbon Canyon Dam
- E03P01 Palm-Valencia Storm Drain
- E03S01 Rose Storm Channel
- E04 Atwood Channel
- E04D01 Yorba Linda Reservoir
- E04P01 Glenview Storm Drain
- E05 Richfield Channel
- E07S05 Nixon Storm Drain
- E08 Carlton Storm Drain
- E08B01 Esperanza Channel
- E08D01 Blue Mud Storm Channel
- E08D02 Collins Channel
- E08P01 Chapman-Beach Storm Drain
- E08P02 Marlboro Storm Channel
- E08P03 Wanda Storm Channel
- E08P04 Buckeye Storm Channel
- E08P06 Santiago Creek Channel
- E08P12 Santiago Creek Retarding Basin
- E08P14 Villa Park Dam
- E08P02 Santiago Dam
- E05P07 La Veta Storm Drain
- E06 Villa Park Storm Drain



<b>DESIGNED AND PRODUCED BY:</b>	
GIS Mapping Unit	
Public Facilities and Resources Department Carmen Copi Garcia	
<b>DATA SOURCE:</b>	
Operations and Information System Division Engle, Arellano, 2011	
The degree of accuracy of the data used affects the quality of the products. It is the user's responsibility to verify the accuracy of the data used for their specific purposes. The County of Orange and the Orange County Flood Control District are not responsible for any errors or omissions in this map or for any damages resulting from its use.	
<b>DATE:</b> March 10, 2009	

11500      0      11500 Feet